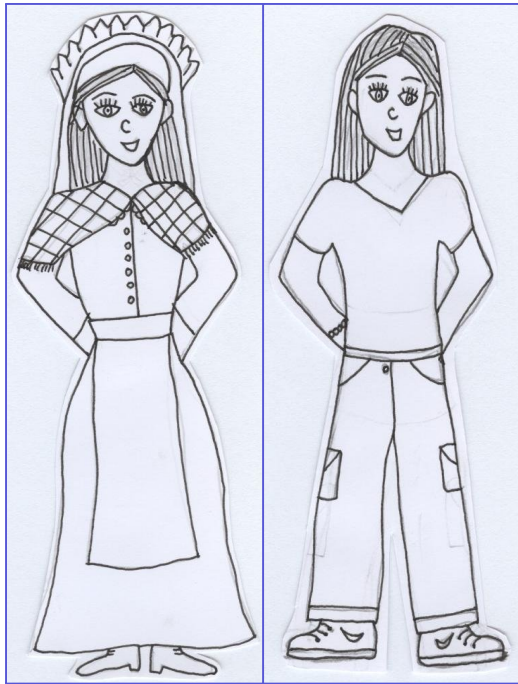




Look at the canal children and modern children below. How many differences can you spot? Try to find at least five.



1. _____
2. _____
3. _____
4. _____
5. _____

1. _____
2. _____
3. _____
4. _____
5. _____

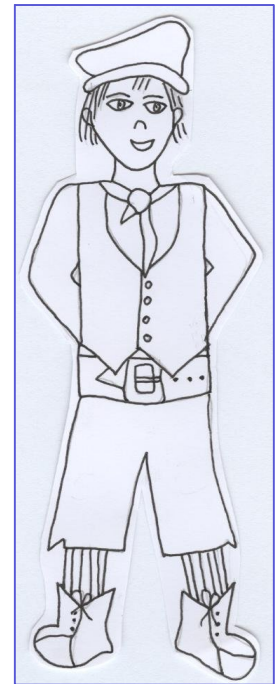
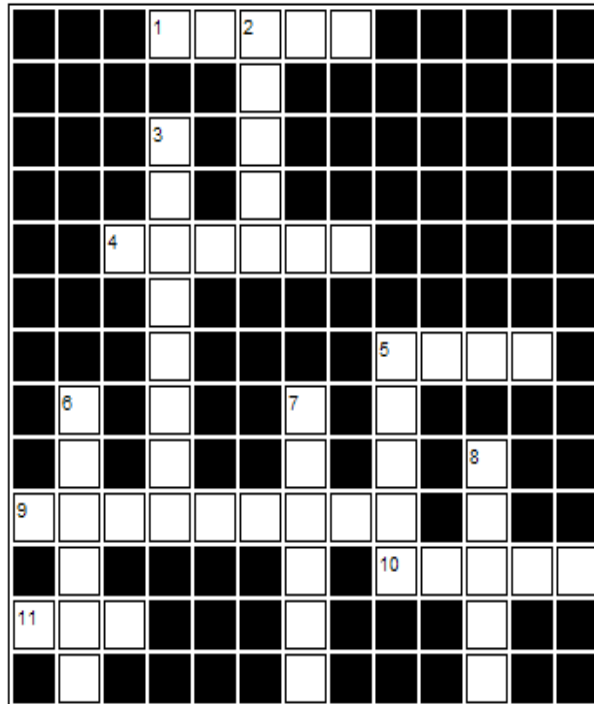
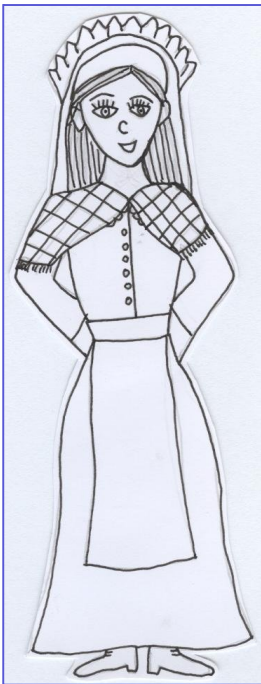
Bonus: Which pair of children look the most similar to each other? The Victorian canal children or the modern children? Why do you think this might be?

Canal Costumes

Use the clues to find the names of the clothing worn by canal families.



Shawl Bonnet Waistcoat Cravat Cap Apron
 Belt Skirt Trousers Boots Blouse Shirt



Across

1. A large woollen scarf worn over a woman's shoulders or head to keep her warm
4. A style of hat worn by canal women
5. Holds your trousers up!
9. A sleeveless jacket worn by men to keep the body warm, but keep the arms free for work
10. Cotton top worn by men
11. Man's hat

Down

2. Worn over the skirt to keep it clean
3. Worn over a man's legs
5. Sturdy working shoes
6. Man's neck scarf
7. Cotton top worn by women
8. Covering a woman's lower half